



leləm
MASTER PUBLIC ART PLAN

FEBRUARY 26, 2020

BALLARD FINE ART
ART CONSULTANTS



TABLE OF CONTENTS

Introduction	3
Context Map	4
Site Plan	5
Project Description	6
Public Realm	12
Musqueam Teachings	15
Community Engagement	18
Guiding Principles	19
Public Art	20
Thematic	21
Public Art Opportunities	22
Public Art Budget	31
Selection Process	32
Conclusion	33



INTRODUCTION

“Art is an expression of values that define a given societies’ relationship with their environment” Jim Kew, 2019

Designed with the ancient Musqueam teachings of inclusivity and respect, leləm, which means “home” in the Musqueam language, is a uniquely considered contemporary community located within the University Endowment Lands. Carefully developed by the Musqueam Capital Corporation, leləm reflects the deep-rooted Musqueam values of environmental stewardship and sustainability, and a richness of community that defines the Musqueam way of life.

leləm is built upon land that the Musqueam people have stood on for thousands of years, and is imbued with their teachings and ancestry. In this spirit, the public art at leləm will be layered, inclusive, and diverse, engaging audiences on a multitude of levels while fostering community dialogue and thoughtful placemaking.

Public art has the potential to play a significant role in strengthening leləm’s vision, supporting identity as well as community creativity, learning, and wellbeing. This Master Public Art Plan outlines the direction and approach of potential public art opportunities with consideration to the needs of leləm as well as the wider social and community contexts.

CONTEXT MAP



SITE PLAN



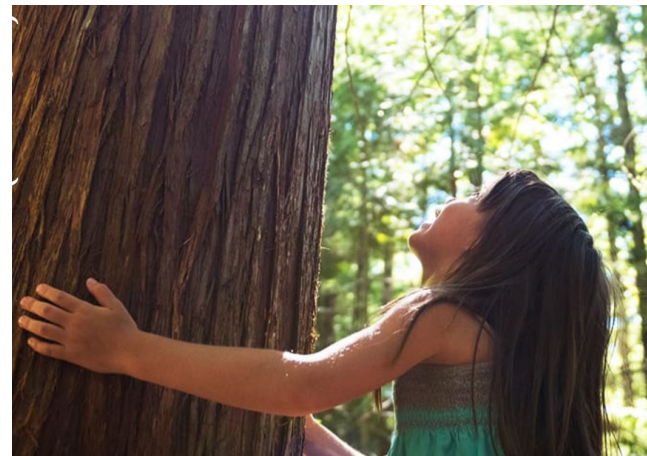


PROJECT DESCRIPTION

“This is a place where we form not only a community but a respectful, inclusive way to live.”

Unprecedented in scope and philosophy, lelarn is a significant four-phased, 21.44-acre master-planned community within the University Endowment Lands (UEL). Adjacent to the University of British Columbia campus, the development sits to the northwest of the University Golf Club, fronting University Boulevard. lelarn supports a diverse and inclusive mix of housing types, with a total of 1,250 homes for an estimated population of 2,500 residents. Thirty thousand square feet of commercial space add a vibrant mixed-use capability to the development, with a multitude of natural and built amenities on site, including restaurants and retail, as well as a community centre, daycare, and supermarket. The adjacent UBC campus is an historic, established and robust community offering a wide array of additional amenities. Importantly, lelarn is surrounded by 874 hectares of Pacific Spirit Park; hiking and walking trails, as well as nature preserves, cover over 63% of the site. Carefully integrating the development into its natural surroundings, lelarn offers a lifestyle that is connected to nature.

lelarn is a thoughtful reconsideration of modern day development, incorporating Musqueam values of interconnection through thinking, feeling, and experiencing. The three key design principles operate in line with this sentiment: Be Responsible, Be Inclusive, and Be Respectful.



Be Responsible - to your neighbour and to those who pass by on the street

One of lelərn’s main design concepts is derived from the planning principle that to create and encourage a livable and vibrant community, the built environment must have a strong connection to the public realm, the neighbourhood, and to the open spaces that have been created around it. The buildings’ interface with the public spaces, as well as the character of the built forms, are critical to the success of the overall community. The external frontages where the buildings meet their adjacent streets are residential in character, with townhouse type units that have individual entries from the public sidewalks.

Be Inclusive - design to invite people in visually or actively

The buildings are sited and formed to create a plaza space that opens up toward the public realm along Road A, the Community Centre, and the pedestrian circulation through the site, creating interesting views and a welcoming entrance into the public space. The openness at the tower base allows views in to the plaza from University Boulevard, creating a visual and physical connection to the public space.

Be Respectful - of the history of the land and of the legacy that will be left behind

lelərn’s architecture is contemporary in character, with subtle references to Musqueam culture. The built form has a strong connection to the landscape, and meets the ground with a scale that enhances the pedestrian experience. In addition to the configuration and massing of the buildings, the design and character of the development is enhanced through the use of long-lasting materials, and colours that reflect the Indigenous teachings of the area.



Architectural Form + Character

lelām's site planning, including siting of the buildings, has been developed to carefully consider and ensure the greatest success of the overall community. The development is strategically sited to take into account lelām's central open space, the public plaza/village square, the orientation and form of the buildings, the materials and character, and the significant aspects of the site.

The building fronting Acadia Road has entry stoops and porches on the street at the ground level of the three storey massing to enhance the residential character of the development, and to provide context with the existing housing across the street. The building fronting University Boulevard has a residential street façade that is designed to conceal the back-of-house area of the commercial space at plaza ground level. Unique loft type units in front of the commercial create a strong residential connection to the street with their entry stoops and porches. The massing and positioning of the lofts create a step-back in the building face to provide a pleasing pedestrian scale along the walkway and to add interest to the massing.

The building at the intersection of University Boulevard and Road A is conceived to be a signature landmark for the entrance to the plaza. Its tower form is a transition from this site to the adjacent tower being developed across Road A. The ground level interface along University Boulevard is an extension of the two storey unit configuration of the five storey residential building to the north, and this scale of ground level is carried around the corner to the new Road A frontage which forms the entry, lobby, and amenity spaces for the building.



The variety of height and massing of the proposed buildings creates an interesting variety between buildings. The change and modulation in facades responds to each building individually yet maintains an overall relationship between each building in the development. The base elements, where each building fronts the street, each reflects a townhouse-like character with bays and stoops, and a similar pallet of materials. The commercial frontages have unique forms created with sloping roofs and timber structures that create a strong connection to the pedestrian spaces of plaza and landscape. The upper portions of the buildings have been articulated through the use of horizontal overhangs and eyebrow elements, bays, and colour palette. Feature vertical elements have been incorporated to add further modulation and interest. Each building has a vertical red tower piece that relates to the vertical circulation within the buildings and the connection to each entry. There are architecturally detailed concrete features that are used vertically and horizontally on the buildings and at grade in the landscape.

The interface of the buildings to the street corners and the siting of the three buildings within the community all create a strong sense of arrival. A significant point of arrival is the corner at University Boulevard and Road A. The openness at the tower base allows views in to the plaza from University Boulevard, creating a visual connection to the public space. The buildings frame the entry to Sword Fern Trail from University Boulevard. The corner of Road A and Acadia Road has been developed to create a public open space feature that highlights the signature tree at the corner and provides an overview of the plaza from the street. At the northeast corner of University Boulevard and Toronto Road the feature building elements of the plaza commercial forms wrap around the building to be visible from the street to draw people in to the public space within.



The commercial and retail buildings feature subtle references to Musqueam culture and the building forms of the region. Traditional building forms come from the ground, and their connection to the landscape is a key element to reflecting the values of the region. With a strong connection to the landscape, the built forms meet the ground with a scale that enhances the pedestrian experience. This is most prominent where the commercial buildings meet the plaza, making it the most visible and interactive area for the public to experience the combination of the landscape and the buildings.

The plaza and the commercial spaces have been designed to reflect Musqueam culture by creating an image of long, low building forms set on an open foreground to remind us of a traditional village arrangement of buildings. To reinforce this image, the commercial spaces reflect the massing of the traditional coastal buildings with low their sloping roof forms and supporting timber structures.



Building Materials

The variety of forms and massing, and the use of high quality building materials, give the project richness in appearance from a distance, and from within. Masonry is used to define the ground related elements of the residential street frontages. All buildings incorporate real, natural wood in protected areas, providing a warmth and richness suitable to the West Coast setting. Glulam structural elements and wood walls supporting the sloping roofs of the commercial buildings provide a strong presence of the use of natural materials. These materials and forms reflect the traditional built forms of the region and add interest and warmth to the pedestrian environment in the public space. The large overhangs protect the wood elements from weathering and provide pedestrian shelter. The buildings are clad with glazing, metal panels and metal roofing. Textured or painted concrete is used in selective portions of the buildings to add warmth and character. Textured natural concrete is used for retaining walls, landscape elements, and for a number of feature elements on the buildings, creating a visual connection to the ground and landscape.

Unprecedented in scope, Ielərñ is set to contribute to the exciting evolution of this neighbourhood in meaningful and lasting ways, celebrating the unique context of this site. As a sought after and inclusive centre of sustainable urban excellence, every detail of Ielərñ is thoughtfully considered to make daily life convenient and enjoyable. Fostering a deep, authentic sense of community, the MCC and its carefully selected development partners are approaching this project with great attentiveness and care, ensuring the deliverance of a vibrant, accessible, and successful community.

PUBLIC REALM

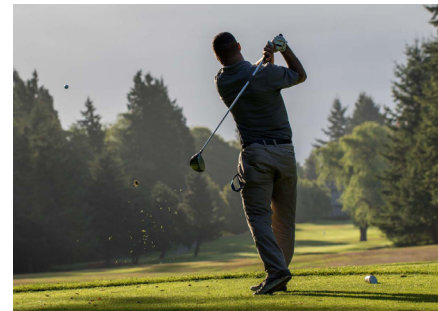


lelám is a collective community featuring diverse, open public spaces and new pedestrian connections that create a cohesive, comprehensive platform for vibrant and active engagement. At lelám, every park, trail, plaza and public space is designed to foster connection, building and sustaining true community. Surrounded by a wide network of amenities including shops, cafes, art galleries, social spaces and parks, lelám will cultivate a wide variety of social activity, increasing community connectivity while enhancing neighbourhood character. Working in concert, the architecture and landscape design offer a multi-faceted public realm with interconnected open spaces and pedestrian pathways that lead in thoughtful ways to the wider network of pedestrian and cycling routes, as well as public transit. Honouring the land by weaving it into the development's daily existence, lelám will encourage a strong sense of home and community, contributing positively to the UEL and City as a whole.

Situated within Pacific Spirit Park – an 874-hectare expanse of old-growth forest, park, and wetlands– connection to nature and preservation of natural spaces are key features of lelám's public realm. Boasting a 73km trail network, with the Swordfern trail connecting directly to the development, Pacific Spirit Park features multiple creeks, one salmon-bearing, as well as the Camosun Bog interpretative boardwalk. Wildlife in the area is plentiful; the park is home to barred owls, bald eagles, chickadees, salamanders, woodpeckers, frogs, and more. lelám is committed to supporting this surrounding natural world, with site trees preserved whenever possible and harvested trees repurposed for use throughout and by the Musqueam community.



Central to Ielām's public realm is the public plaza, or Village Square. Allowing for a variety of uses, abundant in flexibility and welcoming in nature, the plaza shape, scale, and character have been designed to encourage and facilitate a variety of uses and events from individuals sitting to large gatherings. A multitude of diverse outdoor seating, both fixed and movable, captures sunshine and provides development-wide animation, with a terraced seating area anchored by the signature tree on Acadia Road and Road A. Designed to accommodate a variety of uses and events without creating barriers to the pedestrian circulation, Sword Fern Trail passes through the development without interruption. The commercial frontages form the edges of the plaza to provide the opportunity for commercial spaces to have a direct connection to the plaza for related outdoor uses. The residential front yards and building entries are designed with planting and low walls to define spaces and create a welcoming green backdrop. The plaza incorporates carefully designed planters and planting that is appropriate for the spaces and encourages use of the plaza.



UBC Neighbourhood Amenities:

- Museum of Anthropology
- University Golf Club
- UBC Aquatic Centre
- UBC Botanical Gardens
- Chan Centre for the Arts
- Beaty Biodiversity Museum
- Nitobe Memorial Garden
- Pacific Museum of the Earth
- Wreck Beach

Designed to meet the needs of its diverse community, lelám, with its combination of on-site amenities and public realm improvements, will inspire inclusivity and respect through its open design, integrated approach, and commitment to Musqueam teachings. Encouraging and facilitating greater engagement and interaction within the community at large, lelám will create a multi-faceted, welcoming, and interconnected public realm.



MUSQUEAM TEACHINGS

By Thomas Cannell, Musqueam Artist (May 2019)

The x^wməθk^wəyəm (Musqueam) people have been here as long ago as the land was to live upon. Enduring stories describe the landscape as it was eight millennia ago when the delta was only water, and Point Roberts was an island, up until the present day. The name Musqueam relates to the grass məθk^wəy which grew in throughout the community of Musqueam. People remember that in some periods the məθk^wəy grass flourished, and in some periods it could scarcely be found. In some periods the Musqueam people would grow, and in some periods the population would dwindle.

Over this very long period, a specialized way of life evolved around the entire Salish Sea. Musqueam people, in particular, had a more significant number of fishing devices than any other Northwest Coast group; as daily life occurs in a delta of water with more Salmon than any other river in the world. This salmon treasure brought a richness of wildlife connected to Salmon throughout the region, and Musqueam Peoples thrived.

Musqueam families were the solitary residents of the Point Grey Peninsula, ʔəlqṣən. They are the stewards of all the Salmon species that return to spawn in the Mighty Fraser River. Up until 300 years ago, pre-colonial contact, with villages up and down the shores of the lower mainland the Musqueam were the largest group of First Nations Peoples north of California, with a population of tens of thousands. The core of each extended family lived in Long Houses (Winter Houses), at strategic locations that are titled, and that ancestral lineage links from early times.

During the summer months, many smaller families spread out to smaller seasonal houses to abundantly gather for winter ceremonies. Winter houses were sometimes hundreds of feet long and 60 feet wide, with posts usually 4 feet in diameter. These posts are called House posts and adorn family histories, notable ancestors, events that displayed spirit powers of ancestors or mythical creatures and magical powers linked to families.



Welcome Figures have distinctive features and are usually in a pose. There has always been an emphasis on realism with prominent faces full of detail. These were outside of the Longhouse and faced the water.

Both of these carved high and low relief, architectural sculptures declared the long teachings, wealth, and high status of each family. The night around firelight is time for stories in the Longhouse, and it's when children learn by quietly listening to the importance of the connections all living things share. The day was for putting the teachings into practice.

Although first nation communities up the whole Fraser River rely on the Salmon to get through long cold British Columbian winters, Salmon has always been integral to the maturity of Musqueam people and Culture, Musqueam People are therefore also known as "the Salmon People."

The Fraser River has been called the lifeblood of British Columbia, by all accounts it is. The River is the main artery of Western British Columbia with a history of commerce since the last ice age, and the Musqueam have always been the guardians of anyone trying to enter or leave the River.

The language of the Musqueam is *hən̓q̓əmi̓nəm̓*, and it was recognized more than five hundred kilometres in any direction since the trade networks among nations used Musqueam as a travel hub inland and to the north.



The Musqueam gathering place that initially sat on the plateau away from the bluffs created the present-day community of UBC. Another example of paths created by Musqueam peoples throughout these lands thousands of years ago still in use today by thousands of people. This site is a way of life.

ʔəlq̓sən, (Point Grey Peninsula) remembered throughout Musqueam teachings as the Battleground of the West Wind. It is a natural landmark dividing the Fraser River estuary from Burrard Inlet; the winds sweeping in from the west often send rain clouds to the north and clear skies south into the delta.

Musqueam teachings are a continuing story; the community keeps Culture vital and healthy by sharing ancestral teachings and laws and working collaboratively to create a vibrant community for all. With early beginnings and no end, a Musqueam footprint is being placed back on this land, with a renewed gathering place at the heart of UBC.



COMMUNITY ENGAGEMENT



*“Our sniw (teachings) and practices are part of who we are,
and they have persevered because of the wisdom and resilience of our ancestors,
and our intrinsic connection to our lands and waters.
sniw are expressed in our šxʷtəhim (manners and customs),
in our day-to-day interactions,
and in the respect we show to others and to our work.”
(Who We Are - Musqueam Website)*

The cultural landscape of lelarn will be further enhanced through a process of thoughtful community engagement. Involved will be Musqueam community members and stakeholders, ensuring an open, transparent public art process that provides critical insight into the interests and aspirations of the development’s public art. Importantly, community engagement will foster and encourage a distinct interconnectivity between stakeholders and lelarn’s overall environment.

An authentic approach to community engagement will create space for Musqueam decision-making, encouraging the community to participate in the planning processes by bringing together diverse voices and multiple points of view. This will aid in the creation of community legitimacy, supporting a sense of shared responsibility across user-groups while also fostering organic collaborations.

Engagement and ongoing support to Musqueam artists will be an important aspect of the overall public art process. The initial aim is to connect with as many Musqueam artists as possible to let them know about the project and its proposed public art opportunities.

Community consultation and engagement will be achieved through a multi-faceted approach, with opportunities for dialogue and feedback involving small, informal coffee meetings as well as larger, open style forums and open houses. Providing community awareness of the proposed public art site locations, public art opportunities, and artist selection processes, as well as the address of any concerns, is paramount. Meaningful input and feedback from the community engagement process will help to inform the Artist Terms of Reference and Selection Processes.



GUIDING PRINCIPLES

*“Our lands and waters continue to support our cultural and economic practices while serving as a source of knowledge and memory, encoded with our teachings and laws.”
(Who We Are - Musqueam Website)*

- Reflect the vision and spirit of lelám
- Thoughtfully consider the unique teachings, social, and cultural contexts of lelám as a distinctly Musqueam community
- Reflect the thematic *“Musqueam Through Time: Past, Present, Future”*
- Demonstrate traditional Coast Salish art elements, which can be open to interpretive art forms
- Consider community engagement
- Offer maximum public accessibility and visibility for a diverse array of audiences
- Strive for best practices in contemporary Musqueam art
- Provide public artwork that is dynamic, engaging and placemaking
- Honour and preserve the land, exemplifying the best in environmental sustainability and stewardship
- Integrate the public art within the public realm in a meaningful way



PUBLIC ART

lelám's public art will have a distinctive presence, establishing and fostering a uniquely Musqueam context, both culturally and creatively. The overall architectural and landscape design, along with an interconnected public realm, offer diverse opportunities for meaningful public art that will enrich the pedestrian experience for lelám's diverse array of users. The myriad of open spaces set the stage for points of both formal and informal connection, gathering, learning, discussion, and storytelling, inviting audiences to engage in innovative and meaningful ways. Public art opportunities will further enrich and support the placemaking and narrative qualities of the site, strengthening lelám's identity while connecting the development with the wider community and city.

Contributing to the distinctive energy and function of respective site locations, public art will support the flow and integration between the sequences of public spaces, including lelám Plaza, the Wetland area, Forrest Park, the nature trails, children's play spaces, as well as pedestrian and cycle pathways. With high visibility and accessibility, the public art will promote and encourage social connectivity while supporting the natural energy and activity of everyday life.

The public art will be in keeping with lelám's core values, exemplifying excellence in contemporary Musqueam artistic expression and practice. The artwork will reflect the thematic *"Musqueam Through Time: Past, Present, Future"* and demonstrate traditional Coast Salish art elements, which can be open to interpretive forms. A broad range of emergent, mid-career, and senior Musqueam artists will be considered, and may include artist teams, collectives, and mentorships. Artworks will vary in approach, scope, form, and materials.

The public art opportunities for the potential site locations will be realized over time, according to phasing. Phase 1 offers the largest number of sites and allocations for public art as it involves the greatest number of public amenities and buildings, including the Community Centre, daycare, retail and commercial spaces, and lelám Plaza. Artists will be selected early in the process with the opportunity to become important members of the design team.

lelám aims to host an enduring collection of public art that speaks to diverse audiences, inviting dialogue and engagement on multiple levels while celebrating Musqueam culture and the local community.



THEME

Musqueam Through Time: Past, Present, Future

The theme for the Public Art Master Plan at lelám is *Musqueam Through Time*, engaging not only with our past, but also the present and looking forward to the future. The artworks, created by Musqueam artists, will give substance to this new community.

Musqueam is a strong and flourishing community with over a thousand members maintaining strong traditional and cultural beliefs. Conventionally, we used the resources the land provided for fishing, hunting, trapping and gathering to maintain our livelihood. Today, we continue to use these resources for economic and traditional purposes.

We continue to honour our collective responsibilities by keeping our culture alive and strong, and by being the stewards of our land. Our historians and educators pass on Musqueam history to the next generation. This has always been our way. We are of one heart, one mind that honours our land. The land exists as a memorial for ancestors and as a promise of security for future generations. These laws are our history; they make up the foundations of our present and our future success.

lelám is on land that we have occupied for thousands of years. It is imbued with the soul of our people and is alive with the stories of our past. At lelám, MCC seeks to preserve this incredible landscape, and to honour it by weaving artwork throughout the space. lelám is a progressive new community. It is a careful reconsideration of modern day development incorporating Musqueam values, teachings and laws to protect our environment and build a genuine community for all. To consciously create something that changes the way we experience life. Connection to nature, an enriched sense of community, and a living relationship with ancestry guide our way of life, and have informed the conception of this very special community.

lelám is not only a new community but is also a respectful, inclusive way to live. People from all walks of life will experience the meaning of home at lelám, surrounded by nature and Musqueam artworks.

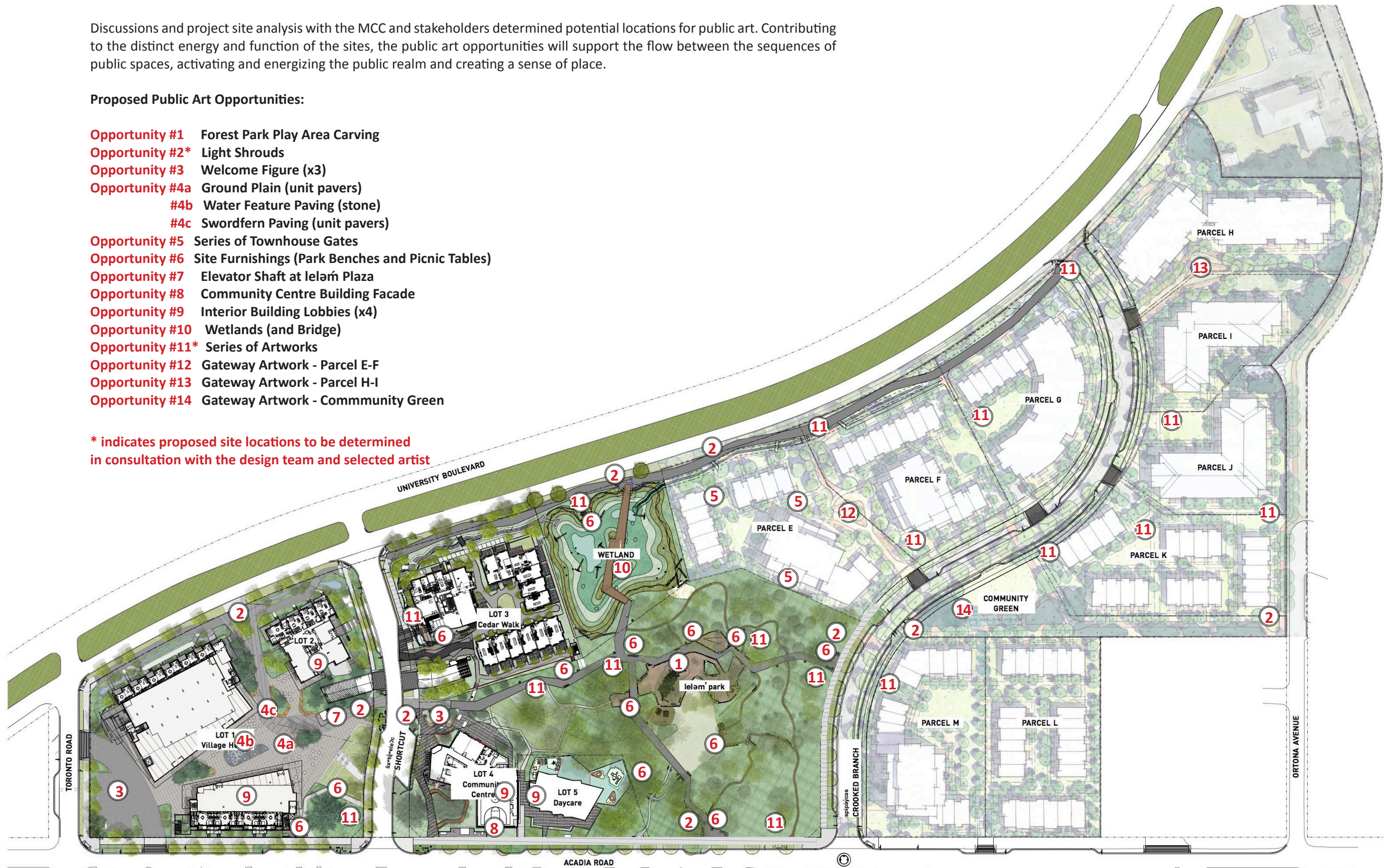
PUBLIC ART OPPORTUNITIES

Discussions and project site analysis with the MCC and stakeholders determined potential locations for public art. Contributing to the distinct energy and function of the sites, the public art opportunities will support the flow between the sequences of public spaces, activating and energizing the public realm and creating a sense of place.

Proposed Public Art Opportunities:

- Opportunity #1** Forest Park Play Area Carving
- Opportunity #2*** Light Shrouds
- Opportunity #3** Welcome Figure (x3)
- Opportunity #4a** Ground Plain (unit pavers)
- #4b** Water Feature Paving (stone)
- #4c** Swordfern Paving (unit pavers)
- Opportunity #5** Series of Townhouse Gates
- Opportunity #6** Site Furnishings (Park Benches and Picnic Tables)
- Opportunity #7** Elevator Shaft at Ielam Plaza
- Opportunity #8** Community Centre Building Facade
- Opportunity #9** Interior Building Lobbies (x4)
- Opportunity #10** Wetlands (and Bridge)
- Opportunity #11*** Series of Artworks
- Opportunity #12** Gateway Artwork - Parcel E-F
- Opportunity #13** Gateway Artwork - Parcel H-I
- Opportunity #14** Gateway Artwork - Community Green

* indicates proposed site locations to be determined in consultation with the design team and selected artist





Opportunity #1: Forest Park Play Area Carving

Target Install: Fall 2020

One artist will be selected to work with the existing wood “column” located in the Forest Park Play Area. The Carving will be an integrated artwork adjoining the children’s play apparatus. This opportunity involves onsite carving, allowing for community participation and learning.

Opportunity #2: Light Shrouds (Design)

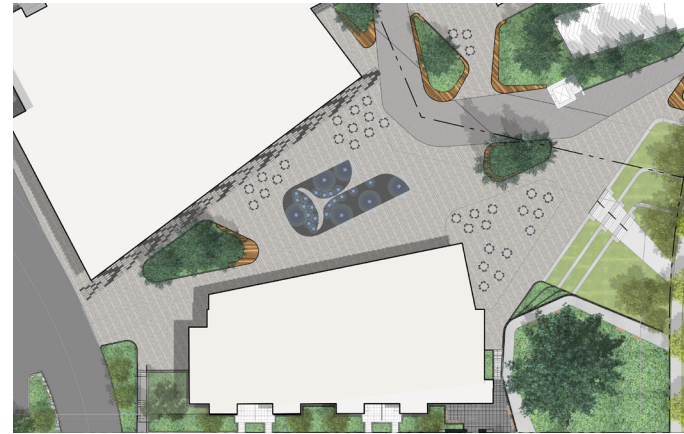
Target Install: Fall 2020

An artist or artist team will be selected to create a single design for a number of light shrouds, located throughout Phases 1 - 4 of the site. The artwork design will be translated onto the freestanding light shrouds, and the selected artists will work closely with the landscape architect. Strengthening the development’s wayfinding and placemaking qualities, the Light Shrouds will provide interconnections for pedestrians while also contributing to safety and comfort.

Opportunity #3: Welcome Figures (x3)

Target Install: Summer 2022

An artist or artist team will be selected to each create one Welcome Figure, for a total of three figures. The Welcome Figures are envisioned as prominent and striking, underlining Ielərn’s sense of place while also providing wayfinding and placemaking. Potential site locations include: the Ielərn Plaza at Shortcut Road, the Community Centre Plaza, and University Blvd. at the end of Sword Fern Trail.



Opportunity #4: Ground Plane Pattern Design for 3 different areas (Design)

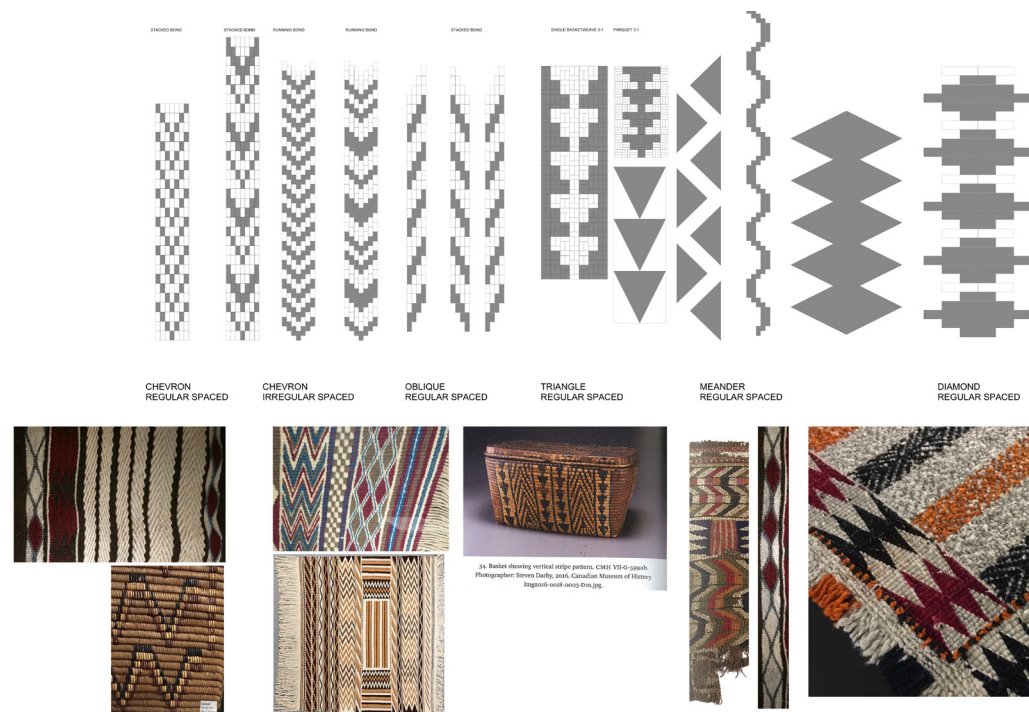
4a: Ground Plane

4b: Water Feature Paving

4c: Swordfern Paving

Target Install: Summer 2022

One artist or artist team will be selected to work with the proposed paving material to create a unique Ground Plane Pattern at 3 different areas of Ielərn plaza (4a, 4b, 4c). This 2D opportunity will involve a Musqueam design element, and could reference weaving patterns. Located at the heart of Ielərn, the main social gathering space, the Ground Plane Pattern will possess strong placemaking qualities. The selected artist or artist team will work closely with the design team and landscape architect for an integrated approach.



36. Basket showing vertical zigzag pattern. CMX 133-0-22946. Photographer: James Doherty 2016. Canadian Museum of History. Digitized with eZEP 0.1m.jpg

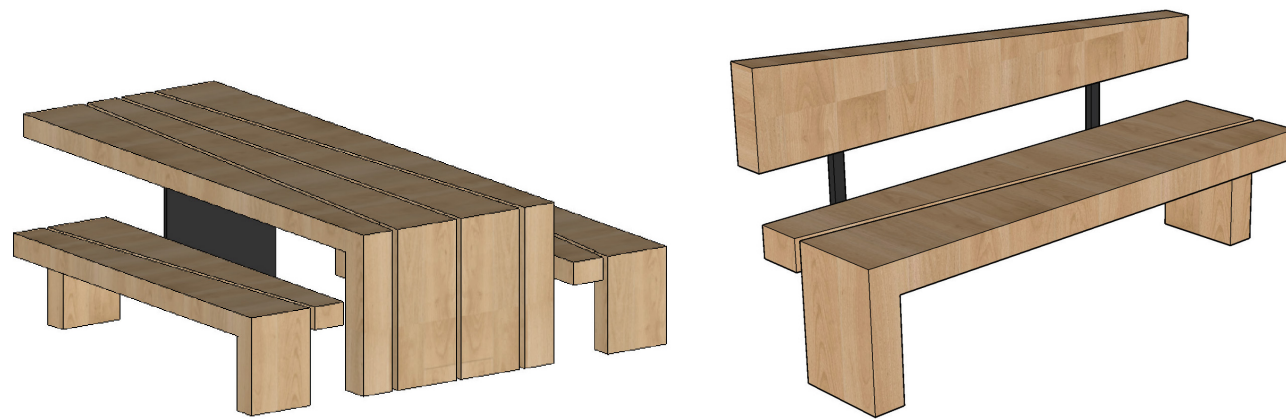


Opportunity #5: Series of Townhouse Gates (Design)

Target Install: Spring 2023

An artist or artist team will be selected to each create a single artwork design for a number of townhouse gates located at Parcels L & M of the Ielərn development. There are a total of 59 smaller gates at the townhouse entrances and 6 larger connector gates situated between the buildings. 3 artists or artist teams will be selected to each create a single artwork design that will be repeated throughout a number of smaller gates (approximately 20 gates each), and one artist will be selected for the design of the larger gates (6 gates).

The artist or artist team will provide a design for the proposed stamped/cut out aluminium panel material of the gates. The selected artists and/or artist teams will work collaboratively with the design team and may consider alternative material options. The public art will provide meaningful opportunities for expression, placemaking, and storytelling.



Opportunity #6: Site Furnishings (Park Benches and Picnic Tables) (Design)

Target Install: Summer 2022

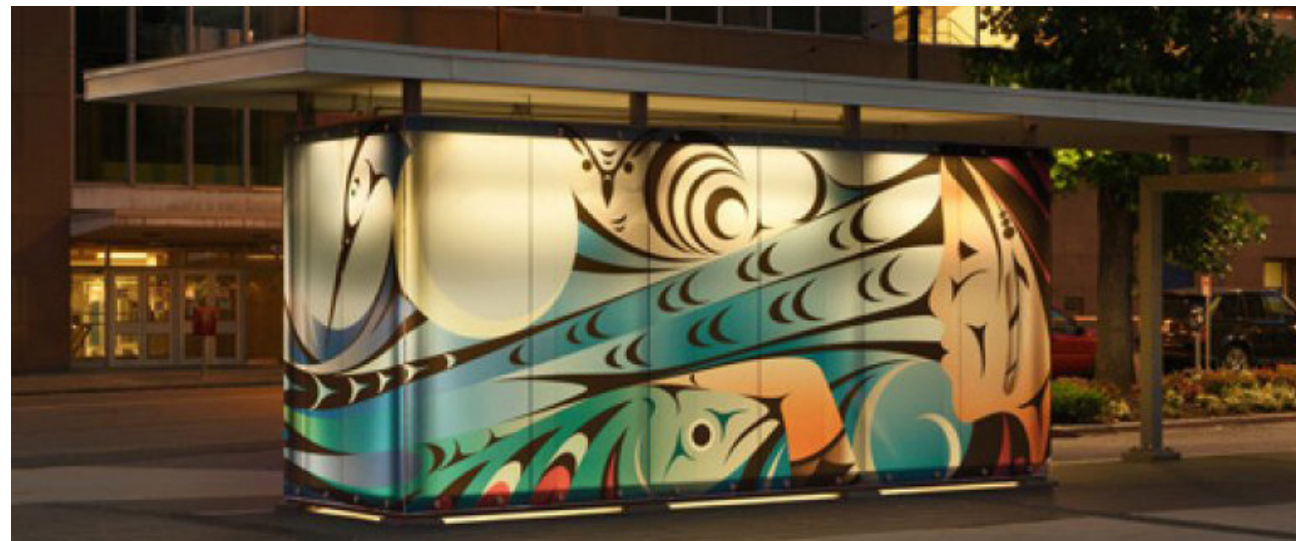
One artist or artist team will be selected to create an artwork design for the park benches and picnic tables situated throughout the Ielarn development. The artwork design will be translated onto the wooden benches and picnic tables, with a variety of artistic approaches being possible. The selected artist will work closely with the landscape architect, for an integrated approach. The site furnishings, including the park benches and picnic tables, are inspired by nature and authentic materials, and are designed to promote conversation and neighbourhood gathering.

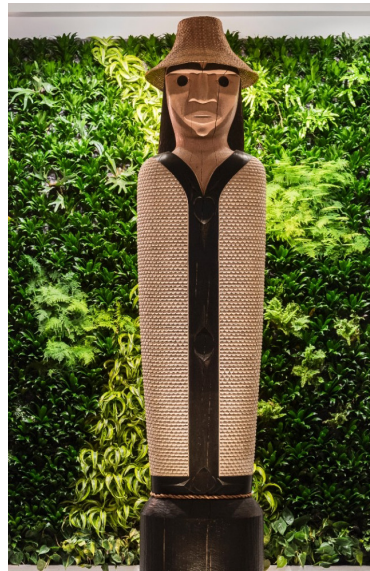
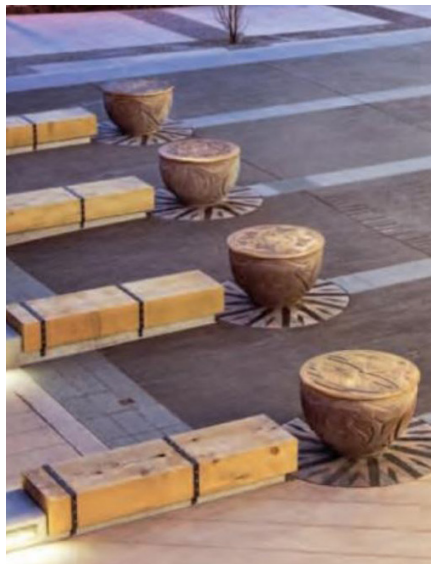
Opportunity #7: Elevator Shaft at Ielarn Plaza

Target Install: Summer 2022

One artist or artist team will be selected to create a dynamic, signature artwork for the elevator shaft at Ielarn Plaza. The art opportunity may include a wide range of approaches, mediums and forms, including lighting. The artist or artist team may work with the proposed material (glass), or propose an alternative material. The selected artist or artist team will work closely with the design team and be provided with as much creative license as possible.

The Elevator Shaft at Ielarn Plaza is sited at the heart of the development, and the artwork will anchor this important entry to the plaza, creating a sense of identity, place, and connectivity.





Opportunity #8: Community Centre

8a: Exterior Building Facade

8b: Interior Integrated Work (Design)

***please note an interior lobby artwork has been identified in Opportunity #9**

8a: Exterior Building Facade

Target Install: Summer 2022

One artist or artist team will be selected to work in collaboration with the design team and architect to design and create an integrated artwork of the Community Centre Building Facade. The selected artist or artist team may work with the proposed building facade material to create a signature public artwork befitting this important “community” based site. The parameters of the opportunity will be articulated in the Expression of Interest documents and at the Artist Information session.

8b: Interior Integrated Work (Design)

One artist or artist team will be selected to work in collaboration with the architecture team to create an integrated artwork for the interior of the Community Centre. This art opportunity primarily involves design work.

Opportunity #9: 4 Interior Building Lobbies

Target Install: Summer 2022

An artist or artist team will be selected to each create an artwork for one of the Interior Building Lobby entrances. Interior Lobbies include, but are not limited to, Daycare (TBC), Community Centre and residential lobbies. A variety of 2D and 3D forms and materials are possible, including painting, photography, metal, glass, or weaving.



Opportunity #10: Wetlands (Bridge)

Target Install: Summer 2022

One artist or artist team will be selected to create a three-dimensional sculptural artwork that responds to the “Wetland” environment. The artwork may include a wide range of approaches, and materials; and may also include the proposed bridge as part of the public art opportunity.

Opportunity #11: Series of Artworks

Target Install: Summer 2022

An artist or artist team will be selected to create a series or sequence of related human-scale artworks. Each artist or artist team will create up to 3 related artworks, working closely with the design team and landscape architect to identify potential site locations. Further details of the opportunity will be articulated in the Expression of Interest documents and at the Artist Information session.

Situated at key intervals along trails and pathways throughout Phase 1 - 4 of the site, these artworks can vary in form, from 2D to 3D. A wide range of approaches and materials are possible, including integrating into the site’s landscape and hardscape features, specifically bridges and walls. Fostering thoughtful interconnections between Ielān’s public spaces, these artworks will weave a cohesive story throughout the development, allowing for moments of discovery and quiet reflection.



Opportunity #12: Gateway Artwork - Parcel E-F

Target Install: Summer 2022

One artist or artist team will create a 3D artwork for the cul-de-sac located between Parcels E & F. A highly visible location, the artwork will offer a strong presence and assist with wayfinding. Materials and approaches are open, and could include lighting.

Opportunity #13: Gateway Artwork - Parcel H-I

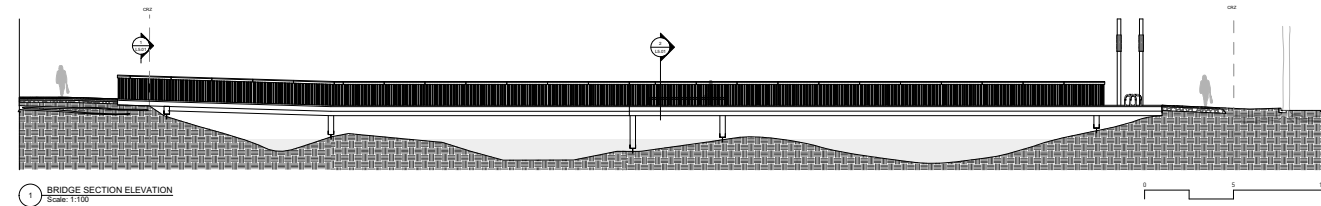
Target Install: Summer 2022

One artist or artist team will create a 3D artwork for the cul-de-sac located between Parcels H & I. A highly visible location, the artwork will offer a strong presence and assist with wayfinding. Materials and approaches are open, and could include lighting.

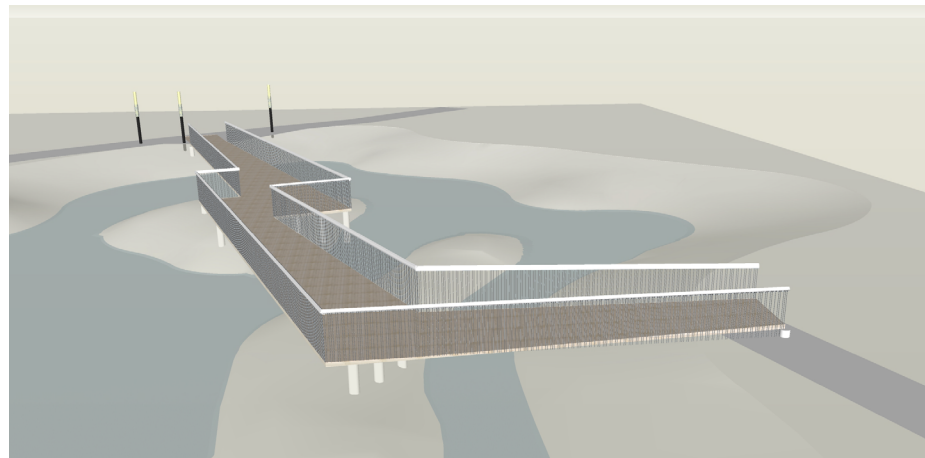
Opportunity #14: Gateway Artwork - Community Green

Target Install: Summer 2022

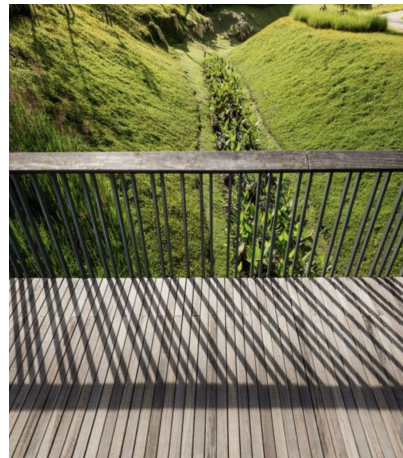
One artist or artist team will create a landmark 3D artwork for the Community Green. A highly visible location, the artwork opportunity presents the possibility for a variety of approaches and materials.



1 BRIDGE SECTION ELEVATION
Scale: 1/8" = 1'-0"



BIRDSEYE VIEW OF WETLAND BOARDWALK



PRECEDENT IMAGE

Further Public Art Opportunities

Artwork Budget: To be determined by the Art Committee

There are potential further opportunities for artwork to be integrated with the landscape design. These opportunities may include an artist design for the village heart signage and the trailhead/wayfinding signage, and custom artistic designs for site furnishings.



Reeds/Grasses



Maglin : MLWR650



ARTWORK BUDGET

The identified total public art budget is \$2,400,000.00.

The Master Public Art Plan identifies potential public art opportunities with proposed recommended artwork budget allocations. The budget allocations are suggestive, and as the art opportunities are developed over time, the budget allocations may be reconsidered and revised at the discretion of the Art Committee.

The total public art budget is allocated to multiple public art opportunities at various site locations. Artwork budgets include the artist honorariums and the artwork budget, which may involve either the artwork design, fabrication and installation, or a design “only” depending on the identified public art opportunity.

The Art Committee reserves the right to select additional artists and designs, with the budget being increased to compensate the artists. Additionally, the Art Committee reserves the right to award an artist or artist team more than one series of works.

Artwork budgets will be further articulated with artist responsibilities in the Expression of Interest documents and at the artist information session.

SELECTION PROCESS

The lelərín public art selection process will reflect Musqueam culture and values with an inclusive and transparent approach in the consideration of Artists for the myriad of diverse public art opportunities.

A lelərín Art Committee consisting of seven members, will be established to guide and oversee the overall Artist selection process with representatives from the Musqueam Capital Corporation and Polygon, project design team, the Greater Vancouver art community and the Musqueam Community. The Musqueam representatives will represent a majority and be selected through an Expression of Interest and may involve rotating participation.

Proposed Art Committee Representatives:

- Musqueam Elder
- Musqueam Community
- Musqueam Community
- Art Professional/Curator
- lelərín Landscape Architect
- Polygon Representative
- Musqueam Capital Corporation

Guided by the lelərín Art Committee, an independent art consultant with expertise in public art and knowledge of Musqueam artists and art practice will facilitate and manage the public art section process for the public art opportunities articulated in the Master Public Art Plan. The art consultant will provide management and support from the initial stages of the Community Engagement, development of the Open Call and Artist Terms of Reference and Expression of Interest submissions, Selection Panel meetings, and Artist Shortlist nomination, through to the artwork concept development and final artist selected. The art consultant will ensure curatorial cohesion and consistency for the overall project in keeping with the lelərín guiding principles.

Each public art opportunity will require a distinctive approach and selection process and involve a selection panel established in consultation with the Art Committee. The panel representatives will include a Musqueam majority, and will consist of an elder, two community members and representatives from Musqueam Capital Corporation, the design team, Stakeholder group, and Art Committee. The selection panel's role will be to review Expression of Interest submissions, nominate the Artist Shortlist, and recommend the final artist and artwork concept to be selected. The Art Committee reserves the right to hire additional Musqueam members in the event of a selection panel member stepping down due to a conflict of interest.

A two-stage Open Call to Musqueam artists or artist teams with an Expression of Interest (EOI) will be established by the art consultant for each public opportunity. The Expression of Interest will outline the artist terms of reference, budget allocation, and target timeline as well as submission criteria. Various postings and notices to the Musqueam website, newsletter, and other media sources as well as Community and Artist Information Sessions will help to get the word out to potential artists.

In stage one, artists with interest in the respective public art opportunity will submit an Expression of Interest for review and consideration. Upon the close of the Open Call, the selection panel will meet to review the EOI submissions and determine a shortlist of artist candidates for the respective public art opportunity. The shortlisted artists will be provided an honorarium for their concept development work.

In stage two, the shortlisted artists will be notified and invited to develop a public art concept proposal, and provided with further detailed project information, timelines, and submission criteria. In addition, the shortlisted artists will have site visit and project orientation meetings with the lelərín design team. Following concept development, the shortlisted artists will present their public art concept proposals to the selection panel. Following the selection panel's review of the shortlisted artist proposals, a final artist or artist team will be recommended for selection.

CONCLUSION

Carefully integrated into its pristine natural surroundings, lelám offers the unprecedented opportunity for a complete community rich in respect for, and celebration of, the area’s Musqueam legacy. Public art has a key role to play in the underpinning of these values, acknowledging the past while looking to the future through a reflection of the distinct spirit and energy of this landmark site.

This Master Public Art Plan provides a road map to guide the long-term vision for thoughtful, dynamic, and diverse public art at lelám. In keeping with the core values of the development, the public art will be initiated over time and in consultation with the community. Involving best practices in contemporary Musqueam art, with opportunities for artworks in a wide range of media, approach, and scope, the artwork at lelám will highlight the traditional Musqueam teachings that stress the importance of home and community. Importantly, given the breadth of the project, there is room for artists, through their creative practices, to reveal and explore unexpected approaches to public art opportunities.

The Public Art at lelám will activate the public realm, inviting engagement and dialogue on a multitude of levels. Providing layers of meaning for residents and visitors alike, lelám is poised to become a culturally significant destination within UBC and beyond, contributing in a meaningful and enduring way to the city’s public art conversation. Connecting ideas and people while supporting lelám’s fundamental concept of “home”, the development’s public art will celebrate the best of contemporary Musqueam culture, contributing to the historic, cultural, and aesthetic value of this groundbreaking community for years to come.

